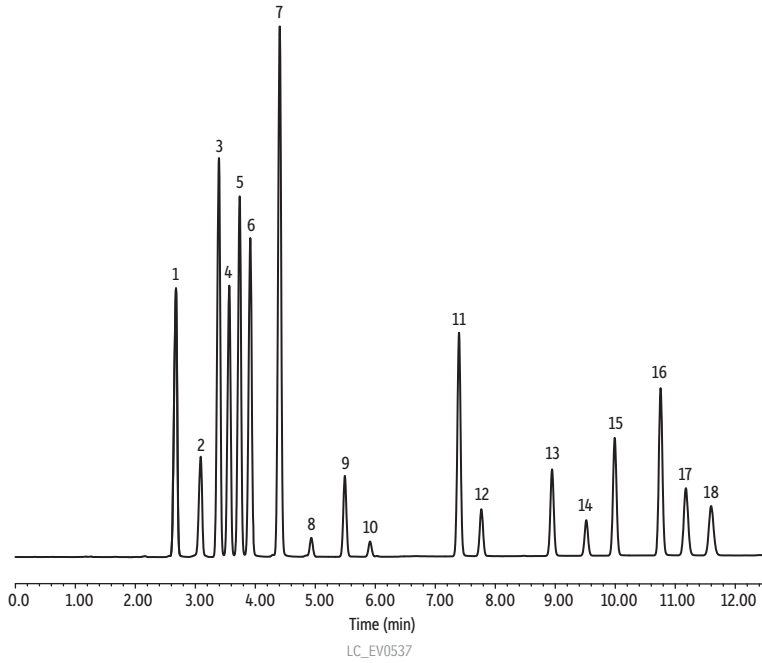


EPA 8310 PAHs on Pinnacle® II PAH by LC-UV



Peaks	tR (min)	Conc. (µg/mL)
1. Naphthalene	2.68	100
2. Acenaphthylene	3.09	100
3. 1-Methylnaphthalene	3.39	100
4. 2-Methylnaphthalene	3.56	100
5. Acenaphthene	3.74	100
6. Fluorene	3.91	100
7. Phenanthrene	4.40	100
8. Anthracene	4.93	100
9. Fluoranthene	5.49	10
10. Pyrene	5.91	10
11. Benzo[a]anthracene	7.39	10
12. Chrysene	7.77	10
13. Benzo[b]fluoranthene	8.95	10
14. Benzo[k]fluoranthene	9.52	5
15. Benzo[a]pyrene	9.99	10
16. Dibenzo[a,h]anthracene	10.75	10
17. Benzo[ghi]perylene	11.18	10
18. Indeno[1,2,3-cd]pyrene	11.60	10

**Column** Pinnacle® II PAH (cat.# 921946E)  
 Dimensions: 150 mm x 3.0 mm ID  
 Particle Size: 4 µm  
 Pore Size: 110 Å  
 Temp.: 30 °C  
**Sample** EPA Method 8310 quality control check (cat.# 31843)  
 Inj. Vol.: 10 µL  
**Mobile Phase**  
 A: Water  
 B: Acetonitrile

Time (min)	Flow (mL/min)	%A	%B
0.00	1.2	50	50
10.0	1.2	0	100
12.5	1.2	0	100
12.51	1.2	50	50
15.0	1.2	50	50

**Detector** UV/Vis @ 280 nm