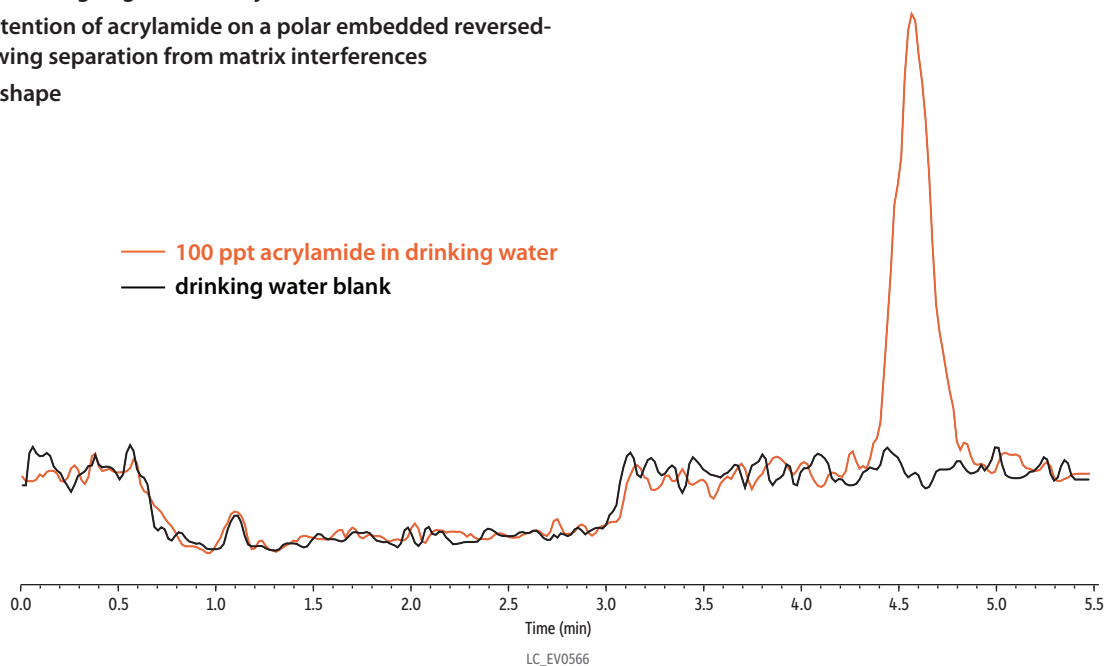


Comparison of 100 ppt Acrylamide in Tap Water to Unfortified Tap Water on Allure Acrylamide

- Capable of handling large volume injections
- Excellent retention of acrylamide on a polar embedded reversed-phase, allowing separation from matrix interferences
- Good peak shape



Peaks	ts (min)	Conc. (ng/L)	Precursor	Product
1. Acrylamide	4.586	100	72.1	55.1

Column Allure Acrylamide (cat.# 916756E)
Dimensions: 150 mm x 3 mm ID
Particle Size: 5 µm
Pore Size: 60 Å
Guard Column: Allure Acrylamide guard cartridge 10 mm, 2.1 mm ID, 5 µm (cat.# 916750212)
Temp.: 22 °C
Standard/Sample Acrylamide (cat.# 30494)
Diluent: Tap water
Conc.: 100 ng/L
Inj. Vol.: 100 µL
Mobile Phase
A: 0.001% Formic acid in water

Time (min)	Flow (mL/min)	%A
0.00	0.8	100
5.5	0.8	100

Detector MS/MS
Ion Mode: ESI+
Mode: MRM
Instrument HPLC
Sample Preparation Tap water samples (1) fortified with 100 ppt acrylamide and (2) neat.
Notes Direct injection with 100 µL injection volume.