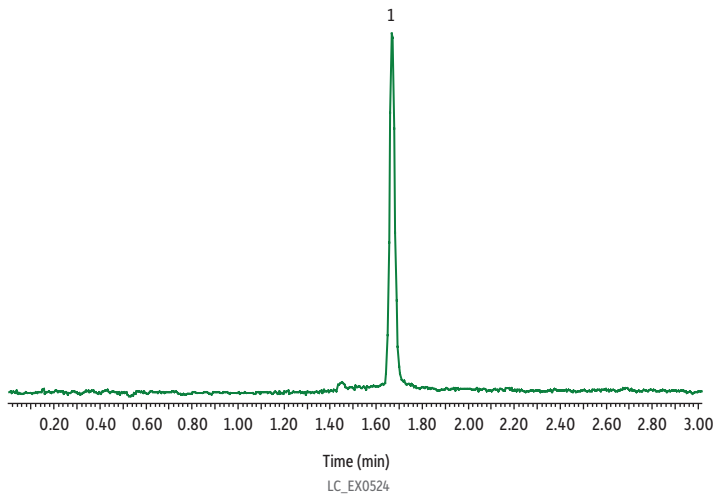
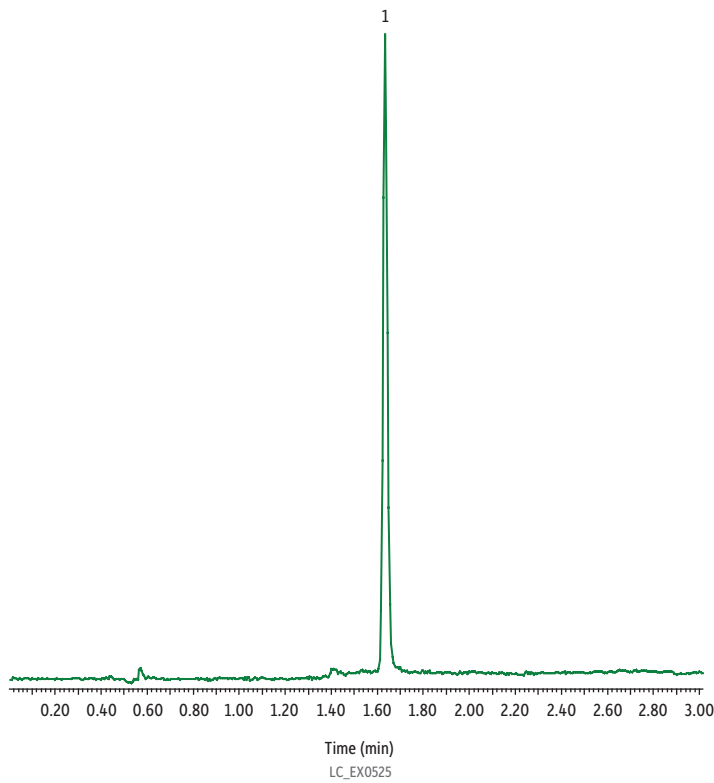


Comparison of Methylmalonic Acid (MMA) on Force Inert C18 and Force C18



Force C18 (963431E)

Compound	Peak Area	Peak Height
1. Methylmalonic acid	7067232	225378



Force Inert C18 (963431E-T)

Compound	Peak Area	Peak Height
1. Methylmalonic acid	11682238	317358

Peaks	Precursor Ion	Product Ion
1. MMA	116.97	72.97

Column
 Temp.: 35 °C
Standard/Sample
 Diluent: 50:50 Water:methanol
 Conc.: 100 ng/mL
 Inj. Vol.: 5 µL
Mobile Phase
 A: Water, 0.5% formic acid
 B: Methanol, 0.5% formic acid

Detector
 Waters Xevo TQ Absolute
 Waters Zspray ESI
 Ion Source:
 Ion Mode:
 Mode:
 MRM
Instrument
 Waters ACQUITY Premier
Notes
 Columns are:
 • Force C18 (cat.# 963431E)
 • Force Inert C18 (cat.# 963431E-T)

Time (min)	Flow (mL/min)	%A	%B
0.00	0.7	95	5
0.50	0.7	95	5
3.00	0.7	5	95
3.01	0.7	95	5
5.00	0.7	95	5