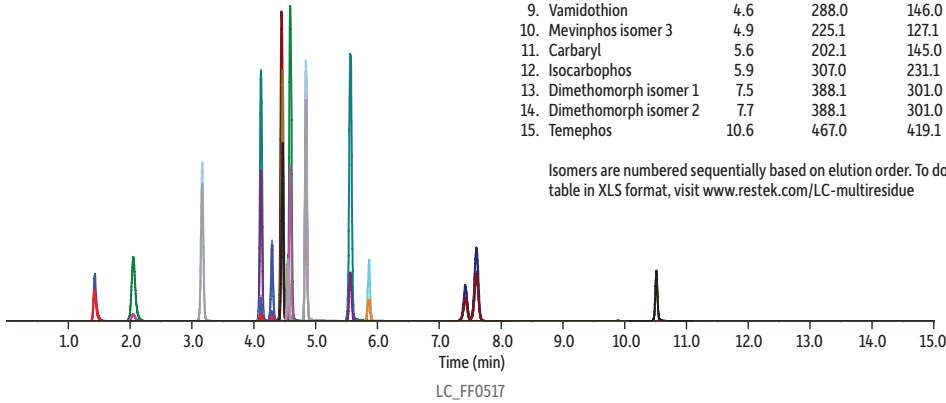


LC Multiresidue Pesticide Standard #1 on Ultra Aqueous C18 by LC-MS/MS

| Peaks | t _R (min) | Precursor Ion (m/z) | Product Ion 1 (m/z) | Product Ion 2 (m/z) |
|---------------------------|----------------------|---------------------|---------------------|---------------------|
| 1. Methamidophos | 1.4 | 142.0 | 94.0 | 125.0 |
| 2. Acephate | 2.1 | 184.1 | 143.0 | 49.0 |
| 3. Omethoate | 3.2 | 214.0 | 182.8 | 124.9 |
| 4. Monocrotophos | 4.1 | 224.1 | 127.1 | 98.0 |
| 5. Trichlorfon | 4.3 | 256.9 | 109.1 | 127.0 |
| 6. Dicrotophos | 4.5 | 238.1 | 193.0 | 112.1 |
| 7. Dimethoate | 4.5 | 230.0 | 199.0 | 125.0 |
| 8. Mevinphos isomer 2 | 4.6 | 225.1 | 127.1 | 193.2 |
| 9. Vamidothion | 4.6 | 288.0 | 146.0 | 118.0 |
| 10. Mevinphos isomer 3 | 4.9 | 225.1 | 127.1 | 193.2 |
| 11. Carbaryl | 5.6 | 202.1 | 145.0 | 127.0 |
| 12. Isocarbophos | 5.9 | 307.0 | 231.1 | 121.1 |
| 13. Dimethomorph isomer 1 | 7.5 | 388.1 | 301.0 | 165.1 |
| 14. Dimethomorph isomer 2 | 7.7 | 388.1 | 301.0 | 165.1 |
| 15. Temephos | 10.6 | 467.0 | 419.1 | 405.0 |

Isomers are numbered sequentially based on elution order. To download this retention table in XLS format, visit www.restek.com/LC-multiresidue



Column Ultra Aqueous C18 (cat.# 9178312)
Dimensions: 100 mm x 2.1 mm ID
Particle Size: 3 µm
Pore Size: 100 Å
Temp.: 50 °C
Sample LC multiresidue pesticide standard #1 (cat.# 31972)
Diluent: Water
Conc.: 50 ng/mL
Inj. Vol.: 20 µL

Max Pressure: 255 bar
Detector AB SCIEX API 4000™ LC-MS/MS
Ion Source: TurbolonSpray®
Ion Mode: ESI+
Ion Spray Voltage: 5.5 kV
Curtain Gas: 30 psi (206.8 kPa)
Gas 1: 40 psi (275.8 kPa)
Gas 2: 45 psi (310.3 kPa)
CAD: 10 psi (68.9 kPa)
Source Temp.: 350 °C
Mode: Scheduled MRM
MRM Detection
Window: 60 sec
Target Scan Time: 0.33 sec
Instrument API LC-MS/MS
Notes Q1/Q3 Resolution: Unit
Autosampler Temp.: 5 °C

Mobile Phase
A: Water + 4 mM ammonium formate + 0.1% formic acid
B: Methanol + 4 mM ammonium formate + 0.1% formic acid

| Time (min) | Flow (mL/min) | %A | %B |
|------------|---------------|----|-----|
| 0.00 | 0.5 | 90 | 10 |
| 1.50 | 0.5 | 90 | 10 |
| 4.00 | 0.5 | 40 | 60 |
| 8.00 | 0.5 | 30 | 70 |
| 11.00 | 0.5 | 0 | 100 |
| 12.00 | 0.5 | 0 | 100 |
| 12.01 | 0.5 | 90 | 10 |
| 15.00 | 0.5 | 90 | 10 |