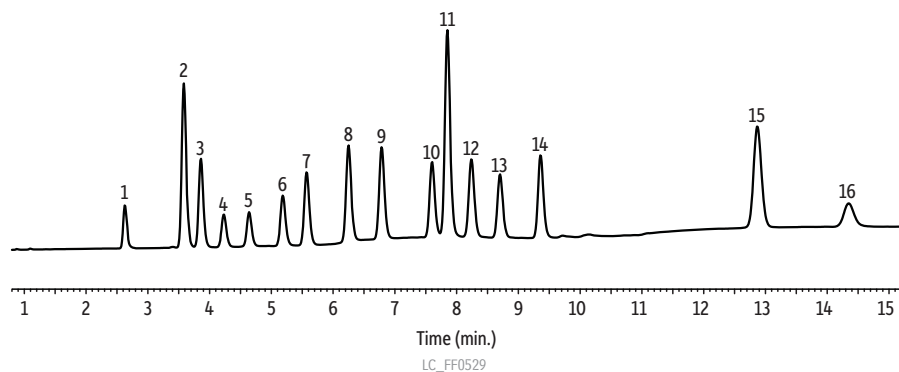


EU 15+1 PAHs on Pinnacle® II PAH (UV/Vis)

Peaks

- | | |
|-------------------------|----------------------------|
| 1. Benzo[c]fluorene | 10. Dibenzo[a,l]pyrene |
| 2. Cyclopenta[cd]pyrene | 11. Dibenzo[a,h]anthracene |
| 3. Benzo[a]anthracene | 12. Benzo[ghi]perylene |
| 4. Chrysene | 13. Indeno[1,2,3-cd]pyrene |
| 5. 5-Methylchrysene | 14. Dibenzo[a,e]pyrene |
| 6. Benzo[j]fluoranthene | 15. Dibenzo[a,i]pyrene |
| 7. Benzo[b]fluoranthene | 16. Dibenzo[a,h]pyrene |
| 8. Benzo[k]fluoranthene | |
| 9. Benzo[a]pyrene | |



Column Pinnacle® II PAH, (cat.# 921946E)
 Dimensions: 150 mm x 3.0 mm ID
 Particle Size: 4 µm
 Pore Size: 110 Å
 Temp.: 30 °C
Sample EU 15+1 PAH standard (cat.# 32470)
 Diluent: Acetonitrile
 Conc.: 10 µg/mL (ppm)
 Inj. Vol.: 5 µL
Mobile Phase
 A: Water
 B: Acetonitrile tetrahydrofuran (95:5)

Time (min)	Flow (mL/min)	%A	%B
0	1.5	30	70
3.00	1.5	25	75
10.00	1.5	0	100
14.50	1.5	0	100
14.51	1.5	30	70
16.5	1.5	30	70

Max Pressure: 275 bar
Detector UV/Vis @ 292, 4 nm
 Cell Temp: 40 °C
 Flow Cell Size: 10 µL
Instrument Shimadzu Prominence