

Resveratrol and Glucoside Derivative Isomers on Raptor™ ARC-18 by LC-MS/MS

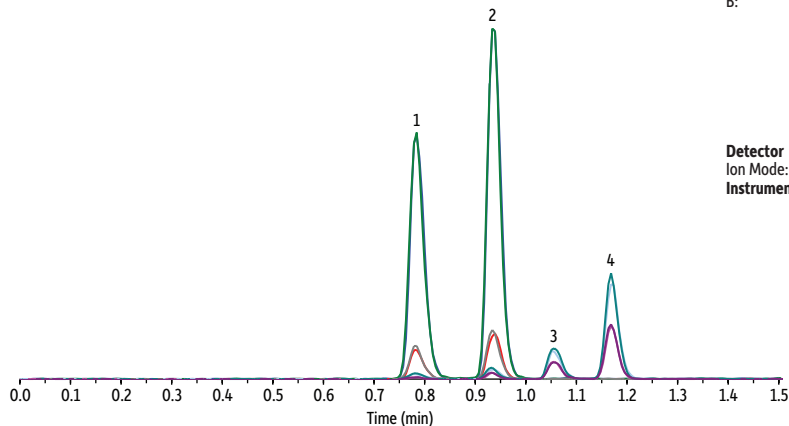
Peaks	tR (min)	Precursor Ion	Product Ion 1	Product Ion 2
1. <i>trans</i> -Piceid*	0.78	389.1	227.0	142.9
2. <i>cis</i> -Piceid*	0.94	389.1	227.0	142.9
3. <i>trans</i> -Resveratrol	1.06	227.0	184.9	142.6
4. <i>cis</i> -Resveratrol	1.17	227.0	184.9	142.6

*Glucoside derivatives of *trans*-resveratrol and *cis*-resveratrol.

Column Raptor™ ARC-18 (cat.# 9314552)
Dimensions: 50 mm x 2.1 mm ID
Particle Size: 5 µm
Temp.: 40 °C
Sample
Diluent: Water
Conc.: 25 ng/mL
Inj. Vol.: 5 µL
Mobile Phase
A: Water + 0.1% formic acid
B: Acetonitrile + 0.1% formic acid

Time (min)	Flow (mL/min)	%A	%B
0.00	0.5	85	15
1.50	0.5	35	65
1.51	0.5	85	15
2.50	0.5	85	15

Detector MS/MS
Ion Mode: ESI-
Instrument HPLC



LC_FF0554