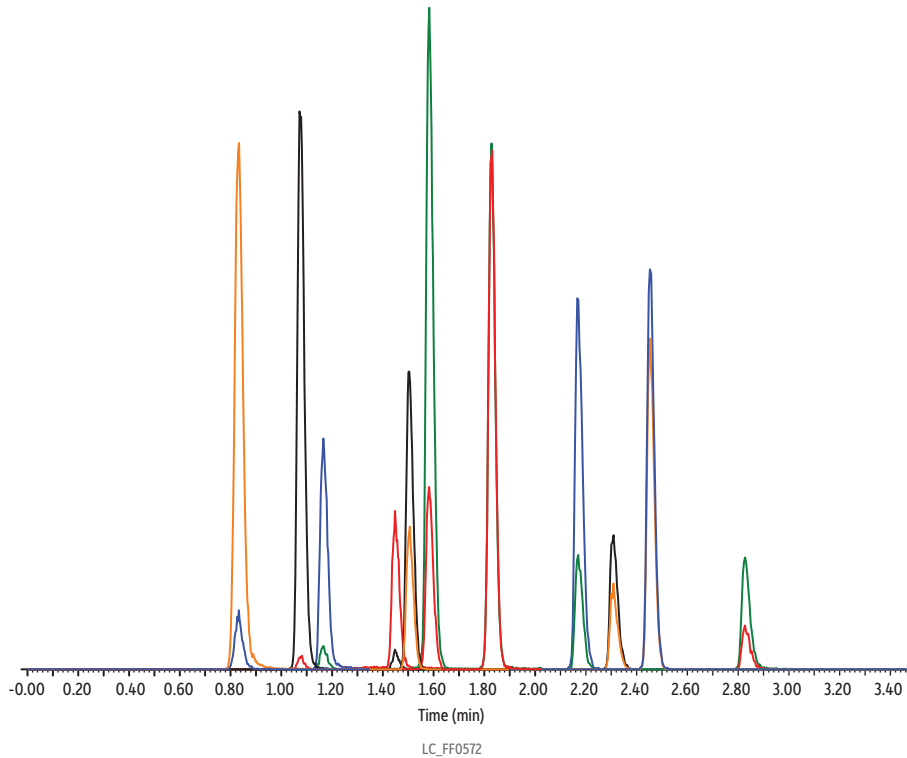


Artificial Sweeteners on Raptor Biphenyl by LC-MS/MS



| Peaks | tr (min) | Conc. (ng/mL) | Precursor Ion | Product Ion | Product Ion |
|----------------------------------|----------|---------------|---------------|-------------|-------------|
| 1. Acesulfame-K | 0.83 | 100 | 162.04 | 82.07 | 77.97 |
| 2. Cyclamate | 1.07 | 100 | 178.14 | 79.99 | 96.00 |
| 3. Saccharin | 1.17 | 100 | 182.02 | 106.01 | 61.97 |
| 4. Sucralose | 1.45 | 100 | 441.23 | 395.17 | 359.21 |
| 5. Aspartame | 1.50 | 100 | 293.27 | 261.19 | 200.12 |
| 6. Alitame | 1.58 | 100 | 330.30 | 312.23 | 295.19 |
| 7. Dulcin | 1.83 | 100 | 181.13 | 138.60 | 107.64 |
| 8. Neohesperidin dihydrochalcone | 2.17 | 100 | 611.40 | 303.21 | 166.13 |
| 9. Stevioside | 2.31 | 100 | 803.58 | 641.52 | 479.45 |
| 10. Neotame | 2.45 | 100 | 377.34 | 200.15 | 345.30 |
| 11. Glycyrrhizic acid | 2.83 | 100 | 821.67 | 351.19 | 113.07 |

Column Raptor Biphenyl (cat.# 9309252)

Dimensions: 50 mm x 2.1 mm ID

Particle Size: 1.8 µm

Pore Size: 90 Å

Temp.: 40 °C

Sample

Diluent: Water

Conc.: 100 ng/mL

Inj. Vol.: 2 µL

Mobile Phase

A: Water, 0.1% formic acid

B: Acetonitrile, 0.1% formic acid

| Time (min) | Flow (mL/min) | %A | %B |
|------------|---------------|----|----|
| 0.00 | 0.3 | 95 | 5 |
| 3.00 | 0.3 | 45 | 55 |
| 3.01 | 0.3 | 95 | 5 |
| 4.00 | 0.3 | 95 | 5 |

Detector MS/MS

Mode: MRM

Instrument UHPLC

Notes Dulcin was analyzed in ESI+ mode. All other compounds were analyzed in ESI- mode.