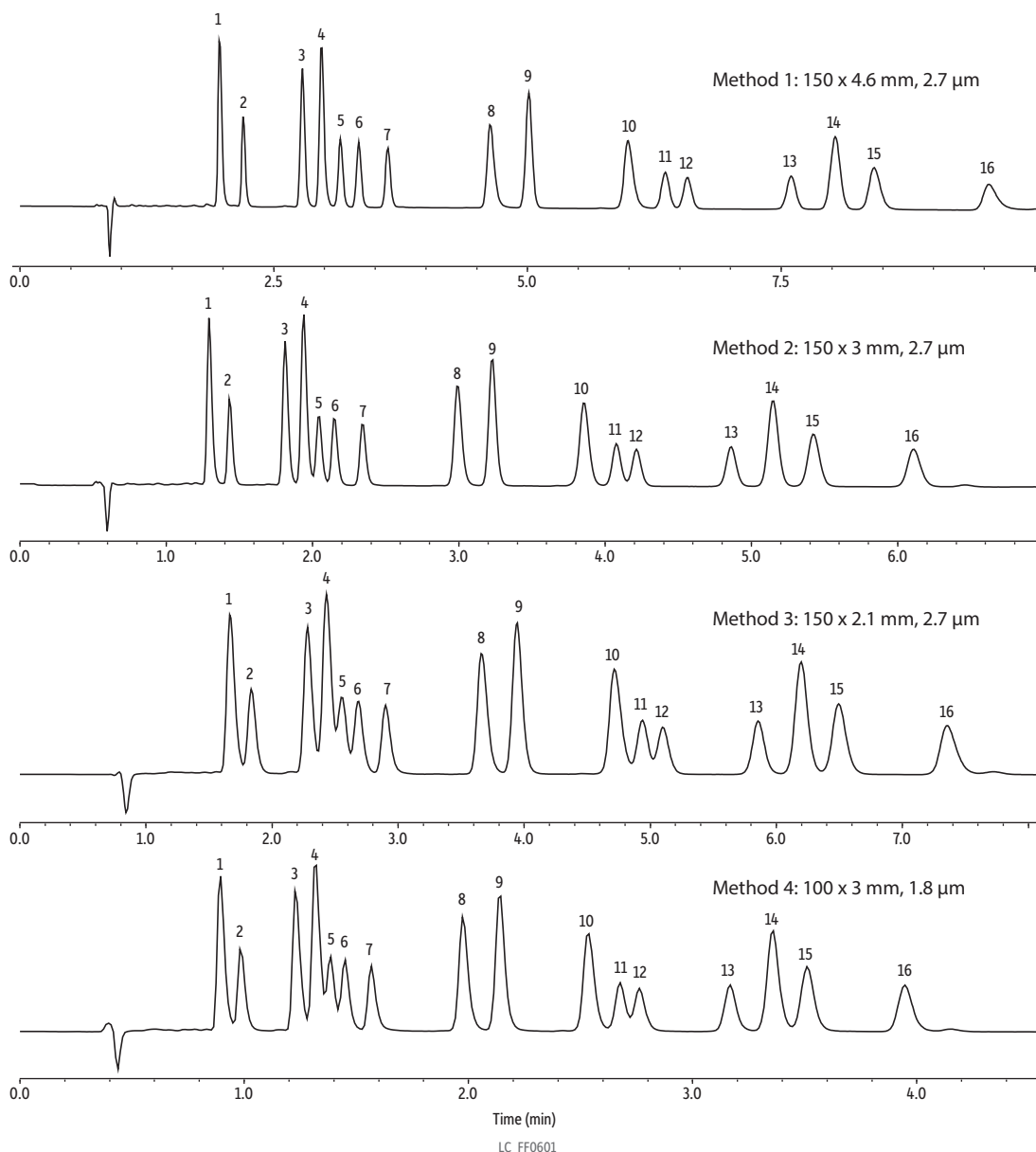


# ECV Effects on Potency Methods: 16 Cannabinoids with 10 $\mu$ L Flow Cell



Peaks	tr (min)	Conc. ( $\mu$ g/mL)	Column	Temp.: 30 $^{\circ}$ C
1. Cannabidiol (CBD)	1.967	50	Raptor ARC-18; 150 x 4.6 mm, 2.7 $\mu$ m (cat.# 9314A65)	Sample Diluent: 25:75 Water:acetonitrile Mobile Phase: Water, 5 mM ammonium formate, 0.1% formic acid:Acetonitrile, 0.1% formic acid (25:75) Flow: 0.4-1.5 mL/min Detector Notes: UV/Vis @ 228 nm <b>Method 1</b> Column: Raptor ARC-18; 150 x 4.6 mm, 2.7 $\mu$ m (cat.# 9314A65) Flow: 1.5 mL/min; isocratic, 9 min Injection volume: 5 $\mu$ L  <b>Method 2</b> Column: Raptor ARC-18; 150 x 3 mm, 2.7 $\mu$ m (cat.# 9314A6E) Flow: 1.0 mL/min; isocratic, 6 min Injection volume: 2 $\mu$ L  <b>Method 3</b> Column: Raptor ARC-18; 150 x 2.1 mm, 2.7 $\mu$ m (cat.# 9314A62) Flow: 0.4 mL/min; isocratic, 10 min Injection volume: 2 $\mu$ L  <b>Method 4</b> Column: Raptor ARC-18; 100 x 3 mm, 1.8 $\mu$ m (cat.# 931421E) Flow: 1.0 mL/min; isocratic, 4 min Injection volume: 1 $\mu$ L
2. Cannabidiol (CBDV)	2.2	50		
3. Cannabidiol (CBD)	2.782	50		
4. Cannabidiol (CBGA)	2.971	50		
5. Cannabigerol (CBG)	3.157	50		
6. Cannabidiol (CBD)	3.337	50		
7. Tetrahydrocannabinol (THCV)	3.624	50		
8. Tetrahydrocannabinol (THCVA)	4.633	50		
9. Cannabinol (CBN)	5.013	50		
10. Cannabinol (CBNA)	5.99	50		
11. $\Delta$ 9-Tetrahydrocannabinol ( $\Delta$ 9-THC)	6.358	50		
12. $\Delta$ 8-Tetrahydrocannabinol ( $\Delta$ 8-THC)	6.576	50		
13. Cannabicyclol (CBL)	7.598	50		
14. Cannabichromene (CBC)	8.033	50		
15. Tetrahydrocannabinol A (THCA-A)	8.416	50		
16. Cannabichromene (CBCA)	9.546	50		

Retention times are for top chromatogram (Method 1).