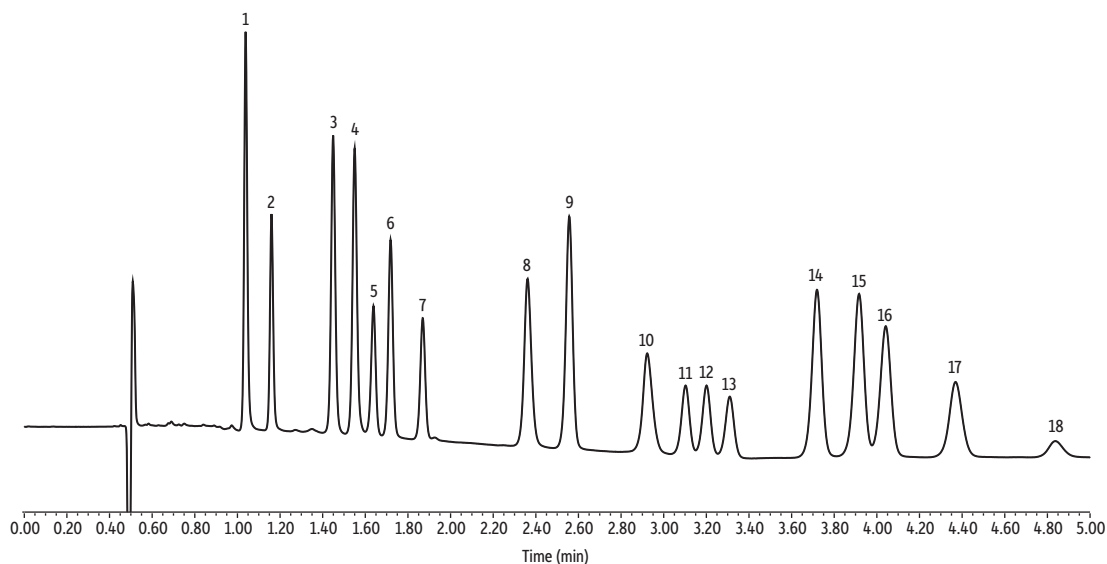


UHPLC Potency for 18 Cannabinoids Including Delta-10-THC Epimers and Exo-THC

- UHPLC method for rapid analysis of 18 cannabinoids.
- Resolves THC isomers including two delta-10-THC epimers and exo-THC.



LC_FF0612

Peaks	tr (min)
1. Cannabidivarinic acid (CBDVA)	1.039
2. Cannabidivarin (CBDV)	1.160
3. Cannabidiolic acid (CBDA)	1.449
4. Cannabigerolic acid (CBGA)	1.550
5. Cannabigerol (CBG)	1.638
6. Cannabidiol (CBD)	1.719
7. Tetrahydrocannabivarin (THCV)	1.870
8. Tetrahydrocannabivarinic acid (THCVA)	2.361
9. Cannabinol (CBN)	2.557
10. Cannabinolic acid (CBNA)	2.923
11. Exo-tetrahydrocannabinol (exo-THC)	3.103
12. d9-Tetrahydrocannabinol (9-THC)	3.201
13. d8-Tetrahydrocannabinol (8-THC)	3.310
14. (6aR,9S)-delta-10-Tetrahydrocannabinol (9S-10-THC)	3.719
15. (6aR,9R)-delta-10-Tetrahydrocannabinol (9R-10-THC)	3.916
16. Cannabichromene (CBC)	4.042
17. δ -9-Tetrahydrocannabinolic acid-A (THCA)	4.369
18. Cannabichromenic acid (CBCA)	4.838

Column Raptor ARC-18 (cat.# 931421E)
Dimensions: 100 mm x 3 mm ID
Particle Size: 1.8 μ m
Pore Size: 90 Å
Guard Column: Raptor ARC-18 EXP guard column cartridge 5 mm, 3.0 mm ID, UHPLC μ m (cat.# 9314U0253)
Temp.: 30 °C
Standard/Sample Cannabinoids acids 7 standard (cat.# 34144)
 Cannabidivarin (CBDV) (cat.# 34123)
 Cannabigerol (CBG) (cat.# 34091)
 Cannabidiol (CBD) (cat.# 34011)
 Tetrahydrocannabivarin (THCV) (cat.# 34100)
 Cannabinol (CBN) (cat.# 34010)
 d9-Tetrahydrocannabinol (d9-THC) (cat.# 34067)
 d8-Tetrahydrocannabinol (d8-THC) (cat.# 34090)
 Cannabichromene (CBC) (cat.# 34092)
 Compounds not present in these mixes were obtained separately.
Diluent: 25:75 Water:acetonitrile
Conc.: 50 μ g/mL
Inj. Vol.: 1 μ L

Mobile Phase
A: 25:75 Water:acetonitrile, 2.5 mM ammonium formate, 0.1% formic acid
B: Methanol, 0.1% formic acid

Time (min)	Flow (mL/min)	%A	%B
0.00	0.8	100	0
2.50	0.8	90	10
4.50	0.8	90	10
4.51	0.8	100	0
6.00	0.8	100	0

Detector UV/VIS @ 228 nm
Instrument UHPLC
Sample Preparation Standards were prepared in a 2 mL screw-thread vial (cat.# 21143) and capped with a short-cap, screw-vial closure (cat.#24498).
Notes Flow cell = 500 nL