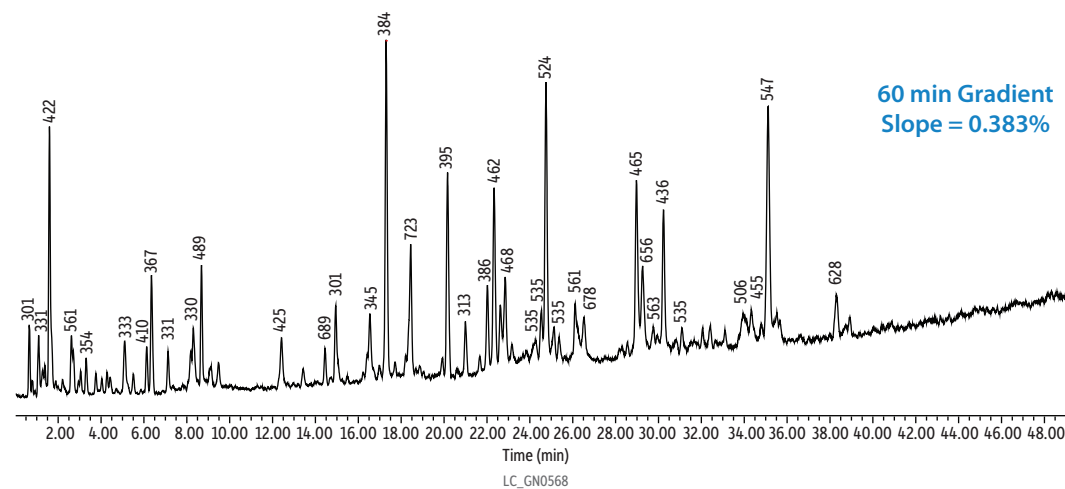
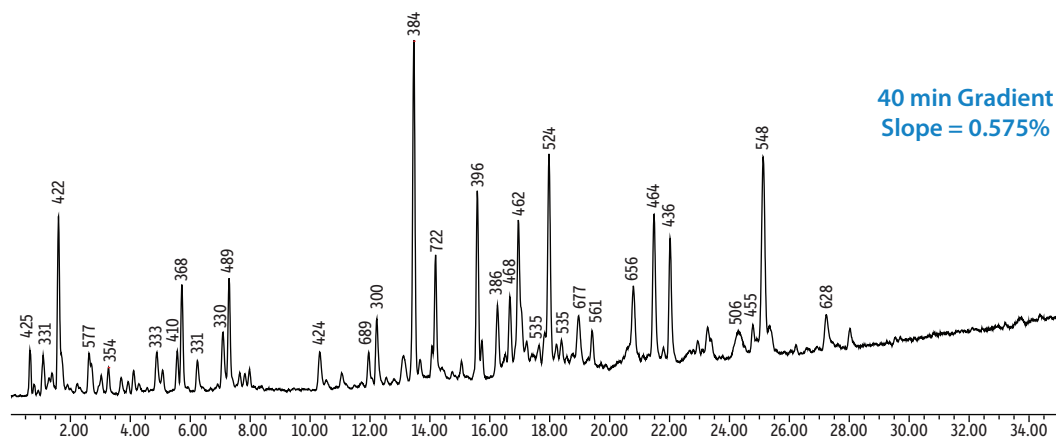
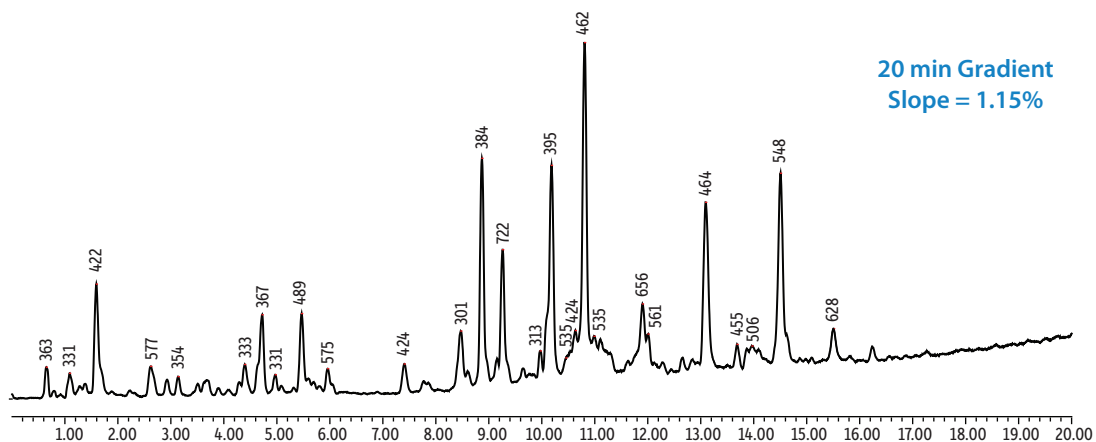


Peptides on Raptor ARC-18 Poster Figure 5: Effects of Gradient Steepness



Column Raptor ARC-18 (cat.# 9314A12)
Dimensions: 100 mm x 2.1 mm ID
Particle Size: 2.7 µm
Pore Size: 90 Å
Temp.: 40 °C
Sample Bovine serum albumin (BSA) tryptic digest standard
Diluent: Water + 0.1% formic acid
Conc.: 5 pmol
Inj. Vol.: 2 µL

Mobile Phase
A: Water + 0.1% formic acid
B: Acetonitrile + 0.1% formic acid

Flow (mL/min)	%A	%B
0.3	98	2
0.3	75	25
0.3	98	2
0.3	98	2

Detector MS
Ion Mode: ESI+
Mode: MS scan
Instrument UHPLC