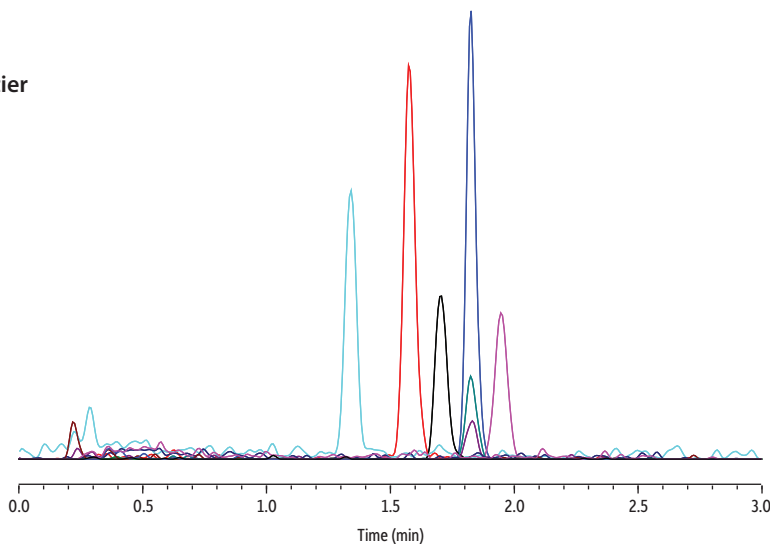


## Mycotoxins in a CBD Oil Sample on Raptor Biphenyl by LC-MS/MS

- 3-minute cycle time.
- Simplified sample cleanup.
- Sensitivity needed for mid-tier LC-MS/MS platforms.



LC\_GN0587

Peaks	tr (min)	Precursor Ion	Product Ion 1	Product Ion 2
1. Aflatoxin G2-13C17	1.340	348.3	330.3	-
2. Aflatoxin G1-13C17	1.576	346.3	257.3	-
3. Aflatoxin B2-13C17	1.703	332.3	303.3	-
4. Ochratoxin A	1.824	404.3	239.1	358.3
5. Ochratoxin A-13C20	1.825	424.3	250.2	-
6. Aflatoxin B1-13C17	1.947	330.3	301.4	-

**Column** Raptor Biphenyl (cat.# 9309A52)  
 Dimensions: 50 mm x 2.1 mm ID  
 Particle Size: 2.7 µm  
 Pore Size: 90 Å  
 Guard Column: Raptor Biphenyl EXP guard column cartridge 5 mm, 2.1 mm ID, 2.7 µm (cat.# 9309A0252)  
 Temp.: 35 °C

**Standard/Sample**  
 Diluent: 45:55 Water:Methanol  
 Inj. Vol.: 5 µL

**Mobile Phase**  
 A: Water, 2 mM ammonium formate, 0.1% formic acid  
 B: Methanol, 2 mM ammonium formate, 0.1% formic acid

Time (min)	Flow (mL/min)	%A	%B
0.00	0.7	35	65
2.00	0.7	10	90
2.01	0.7	35	65
3.00	0.7	35	65

**Detector** MS/MS  
 Ion Mode: ESI+  
 Mode: MRM  
**Instrument** UHPLC

**Sample Preparation** 0.25 g of commercially available hemp-derived CBD oil was weighed into a 2 mL vial. A working internal standard was prepared using 13C labeled analogs at a concentration of 250 ng/mL in methanol. 10 µL of the working internal standard was aliquoted into the sample followed by vortexing for 10 seconds at 3000 rpm. 1 mL of 45:55 H<sub>2</sub>O:MeOH was added to the sample. The sample was vortexed for 30 seconds at 3000 rpm. The sample was then centrifuged at 3000 xg for 5 min at 10 °C. 750 µL of the supernatant was transferred to a conditioned (1 mL 45:55 water:methanol) Resprep bonded reversed phase SPE cartridge (Restek cat.# 26030). The sample was pulled through under vacuum into an autosampler vial for LC-MS/MS analysis.

**Notes** Want even better performance when analyzing metal-sensitive compounds? Check out Inert LC columns at [www.restek.com/inert](http://www.restek.com/inert)