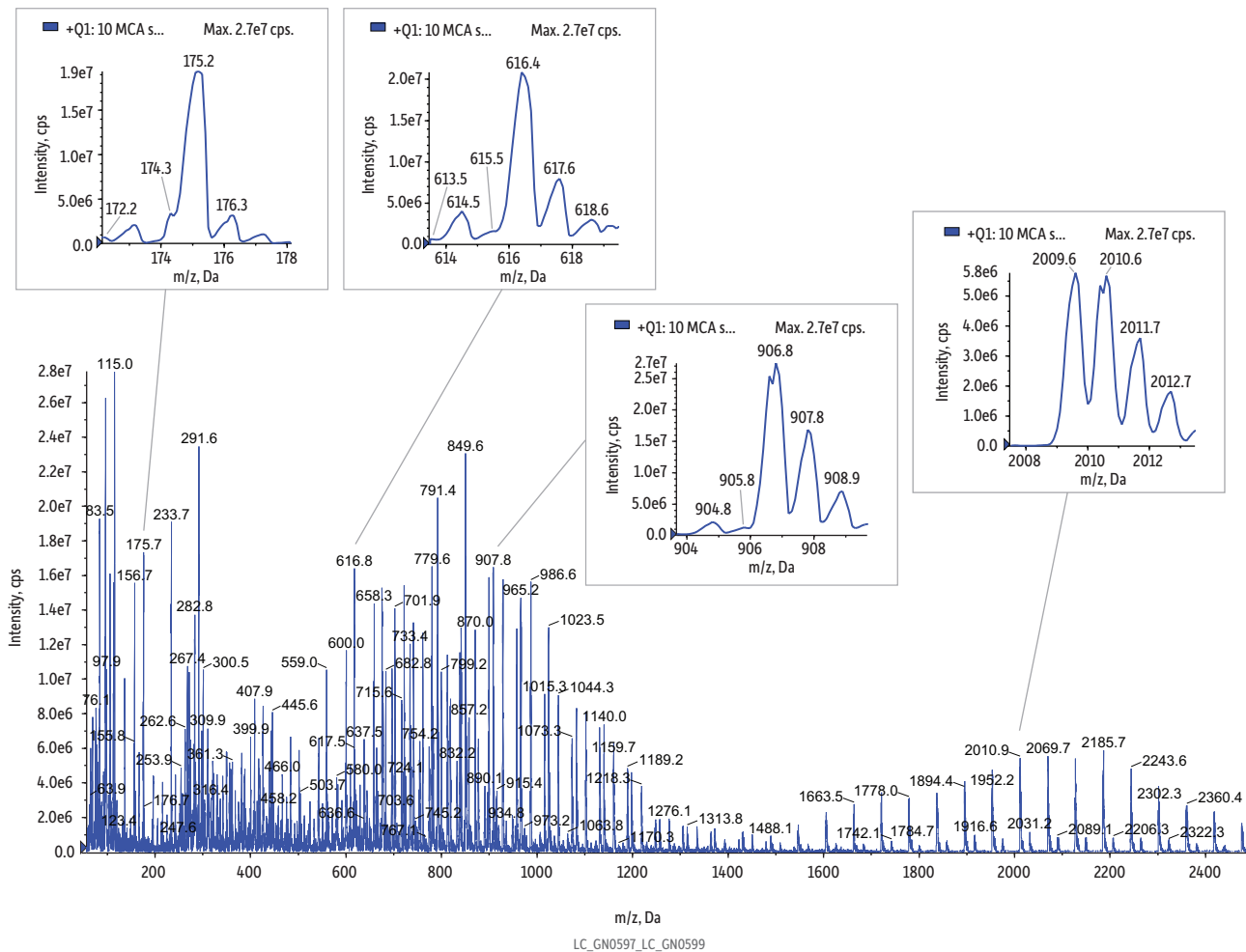


OEM Electrode: Polypropylene Glycol (Q1, Full Scan with Calibration Ions in Insets)

+Q1: 10 MCA scans from Sample 2 (Sciex Electrode_PPG Pos_Full Scan)

Max. 2.8e7 cps



Column
Sample Pos PPG 1x10⁻⁵ M
Conc.: 1x10⁻⁵ Molar
Mobile Phase
Flow: mL/min
Detector API 4000
Ion Source: Electrospray
Ion Mode: ESI+
Mode: MS scan
Instrument Applied Biosystems/MDS Sciex LC-MS/MS System
Notes Original equipment ESI electrode