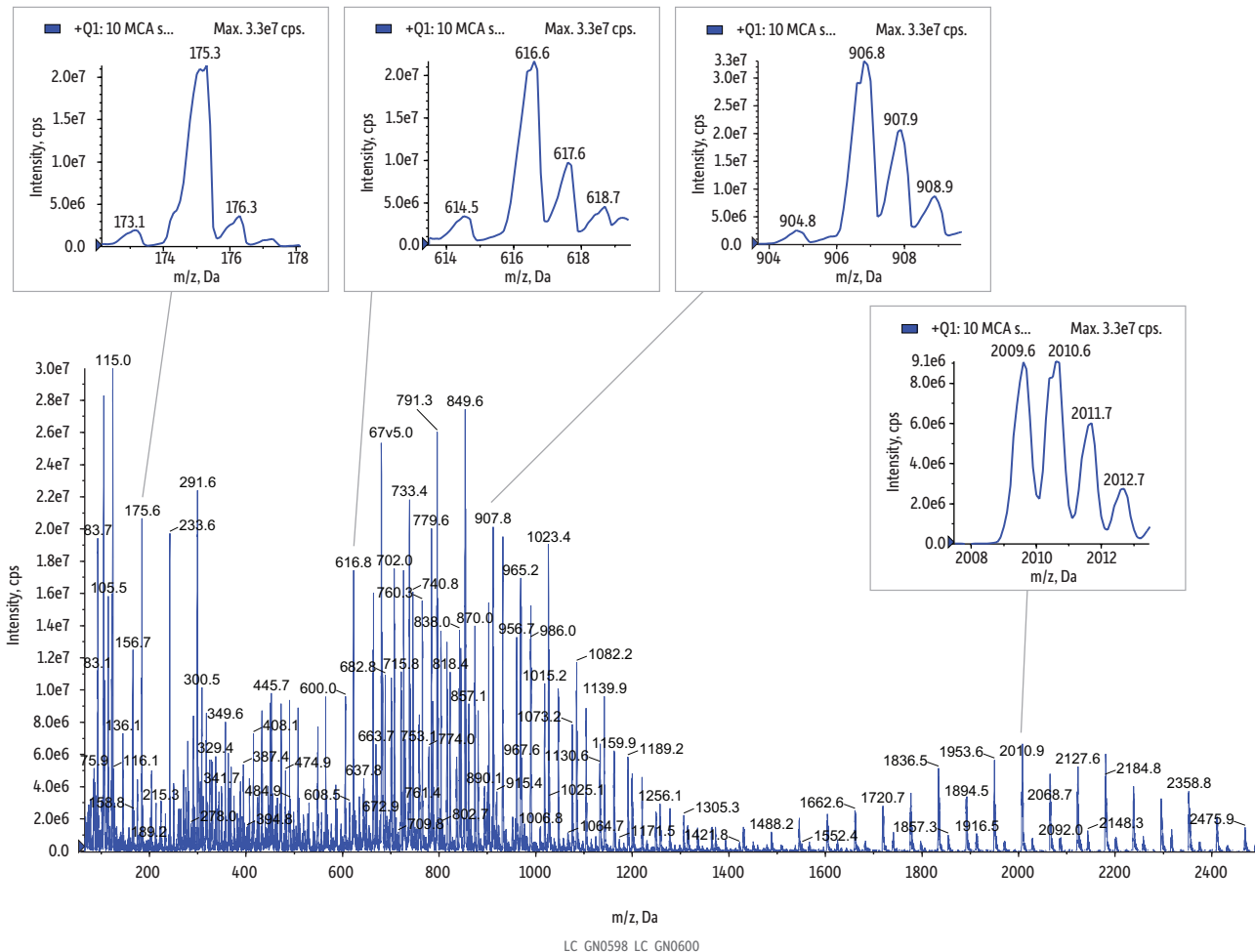


# Long-Life Electrode: Polypropylene Glycol (Q1, Full Scan with Calibration Ions in Insets)

+Q1: 10 MCA scans from Sample 30 (Restek LL3 PPG Pos Q1 Full Scan)

Max. 3.0e7 cps.



**Column**  
**Sample** Pos PPG 1x10<sup>-5</sup> M  
**Conc.:** 1x10<sup>-5</sup> Molar  
**Mobile Phase**  
**Flow:** mL/min  
**Detector** API 4000  
**Ion Source:** Electrospray  
**Ion Mode:** ESI+  
**Mode:** MS scan  
**Instrument** Applied Biosystems/MDS Sciex LC-MS/MS System  
**Notes** Long-Life ESI electrode