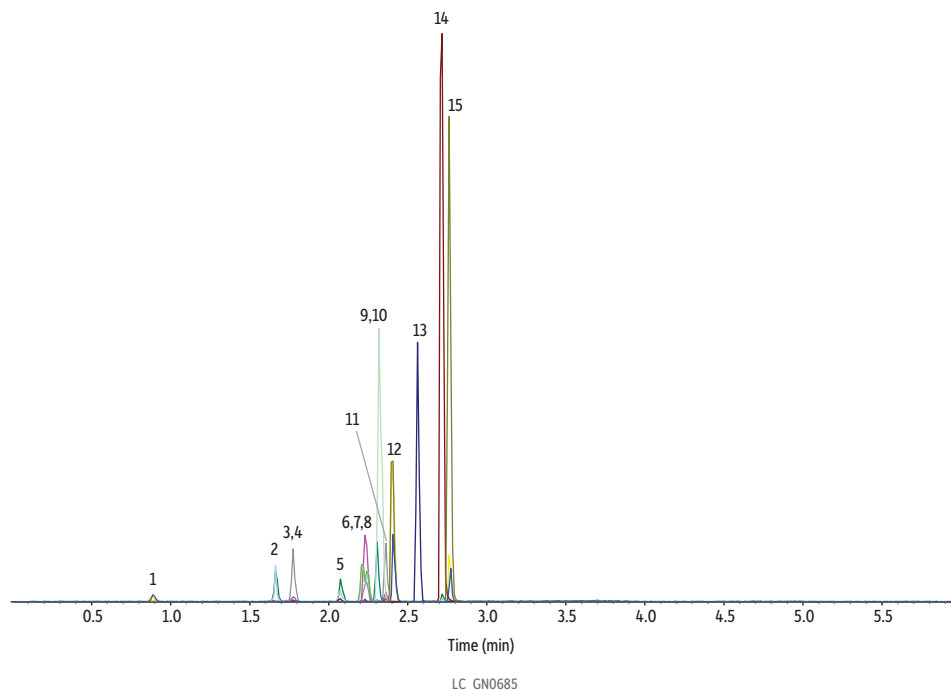


EZLC Optimized Model



Peaks	tr (min)	Precursor Ion	Product Ion
1. Normorphine	0.89	272.3	165.2
2. Morphine	1.67	286.2	152.1
3. Oxymorphone	1.77	302.1	227.2
4. Morphine-N-oxide	1.78	302.3	285.2
5. Norcodeine	2.07	286.1	151.9
6. Phentermine	2.21	150.3	91.1
7. Methamphetamine	2.21	150.3	91.1
8. Dihydrocodeine	2.23	302.2	199.0
9. Codeine	2.31	300.2	152.0
10. O-Desmethyl- <i>cis</i> -tramadol	2.32	250.2	58.0
11. Noroxycodone	2.36	302.1	227.0
12. Desomorphine	2.40	272.1	152.1
13. N-Desmethyltapentadol	2.56	208.1	121.2
14. Pentazocine	2.71	286.2	218.1
15. Dextromethorphan	2.76	272.2	215.1

Column Raptor Biphenyl (cat.# 9309A12)
 Dimensions: 100 mm x 2.1 mm ID
 Particle Size: 2.7 µm
 Pore Size: 90 Å
 Temp.: 30 °C

Standard/Sample
 Diluent: Water
 Conc.: 100 ng/mL
 Inj. Vol.: 1 µL

Mobile Phase
 A: Water, 0.1% formic acid
 B: Acetonitrile, 0.1% formic acid

Time (min)	Flow (mL/min)	%A	%B
0.00	0.6	96	4
0.50	0.6	96	4
1.50	0.6	85	15
3.00	0.6	0	100
3.01	0.6	96	4
6.00	0.6	96	4

Detector MS/MS
 Ion Source: Electrospray
 Ion Mode: ESI+
 Mode: MRM
Instrument API LC-MS/MS