

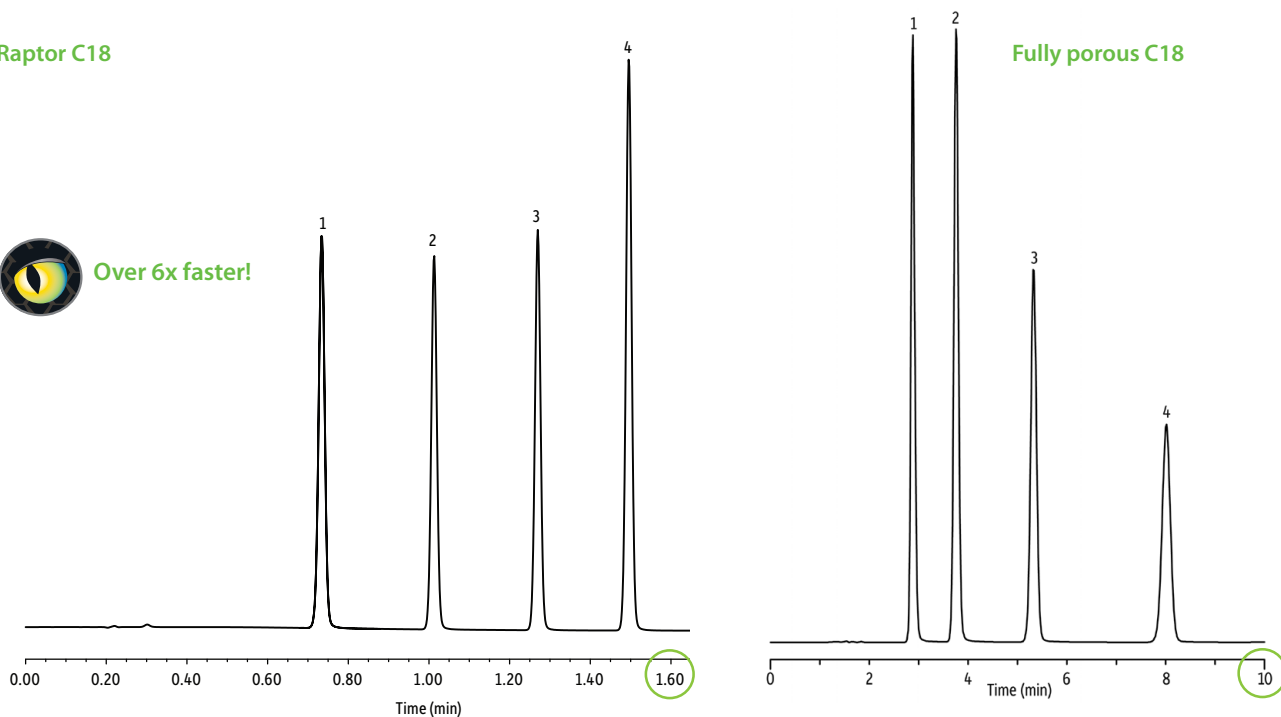
Speed Comparison of Raptor C18 vs. FPP C18 for Raptor C18 Sales Sheet Figure 4

Raptor C18

Fully porous C18



Over 6x faster!



LC_PH0543

Peaks	Raptor C18 t _r (min)	Fully Porous C18 t _r (min)
1. Methylparaben	0.73	2.90
2. Ethylparaben	1.01	3.77
3. Propylparaben	1.27	5.34
4. Butylparaben	1.50	8.03

Column See notes
Standard/Sample Parabens
Conc.: 100 µg/mL
Mobile Phase
Flow: 1.0 mL/min
Detector Raptor C18: PDA @ 254 nm; FPP C18: UV/Vis @ 254 nm
Notes
Raptor C18
 Column: Raptor C18 (cat.# 9304512); 100 mm x 2.1 mm ID, 5 µm
 Temp.: 40 °C
 Sample diluent: water
 Inj. vol.: 1 µL
 Mobile phase: A: water, B: acetonitrile
 Gradient (%B): 0.00 min (20% B); 2.00 min (80% B); 2.01 min (20% B); 3.50 min (20% B)

Fully Porous Particle (FPP) C18
 Column: traditional fully porous C18; 150 mm x 4.6 mm ID, 5 µm
 Temp.: ambient
 Sample diluent: methanol
 Inj. vol.: 5 µL
 Mobile phase: 0.1% acetic acid in water:acetonitrile (50:50)